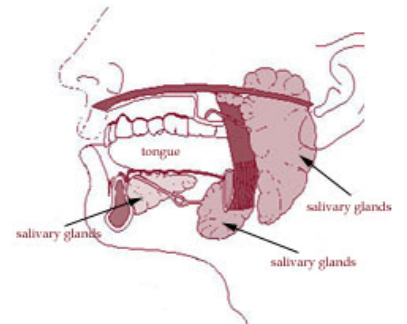
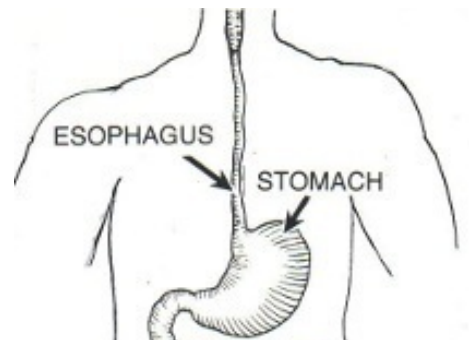


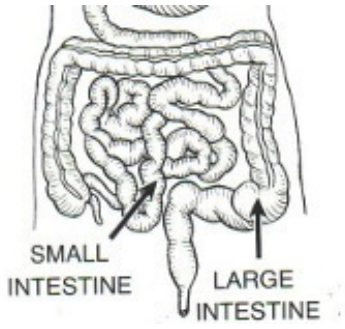
TEETH



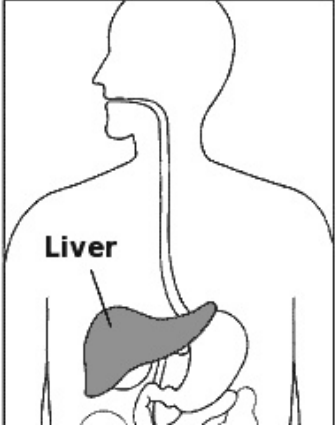
SALIVA



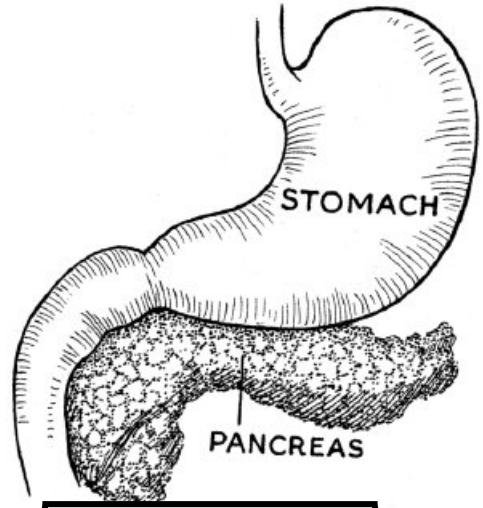
STOMACH



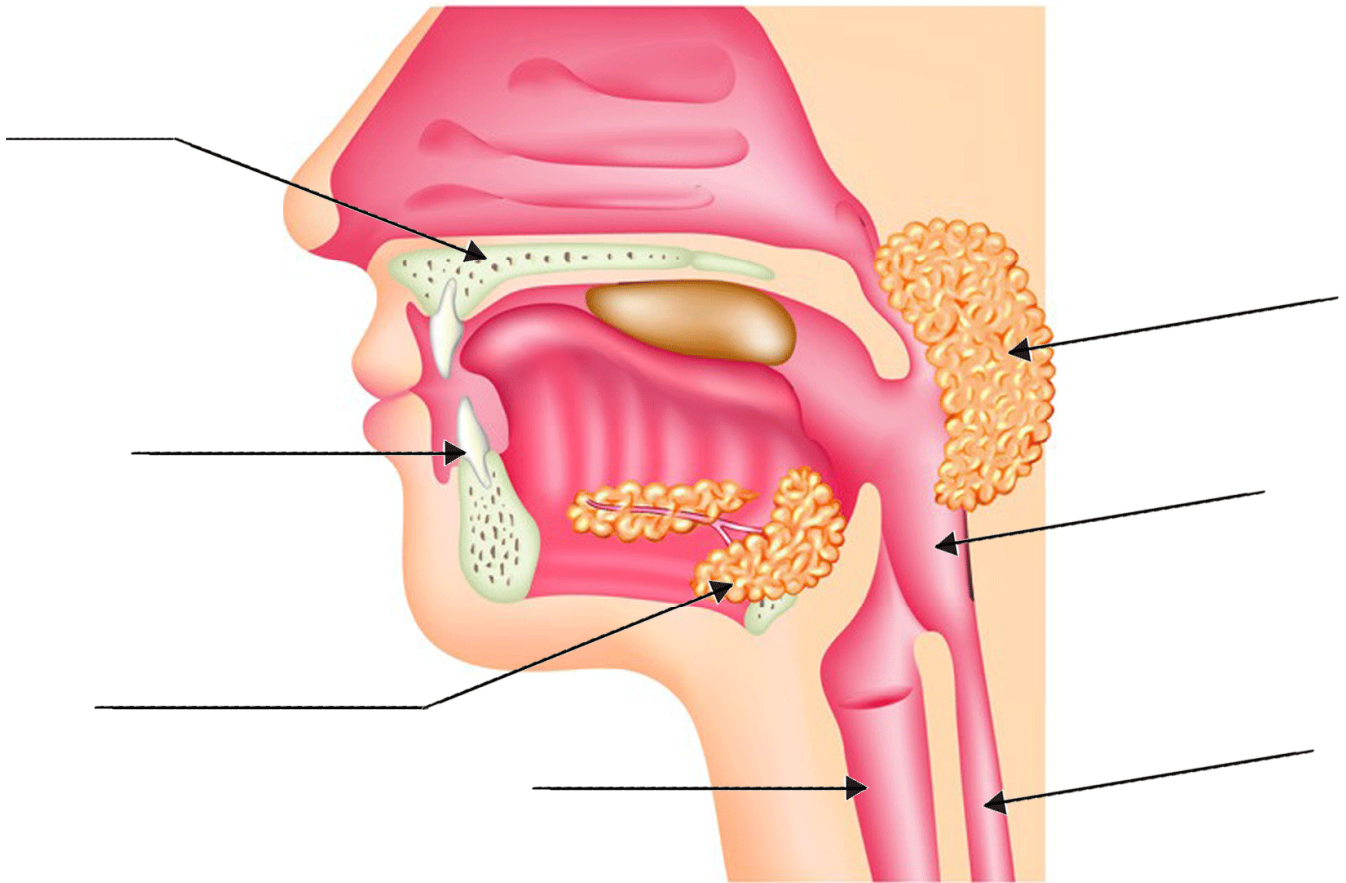
SMALL
INTESTINE



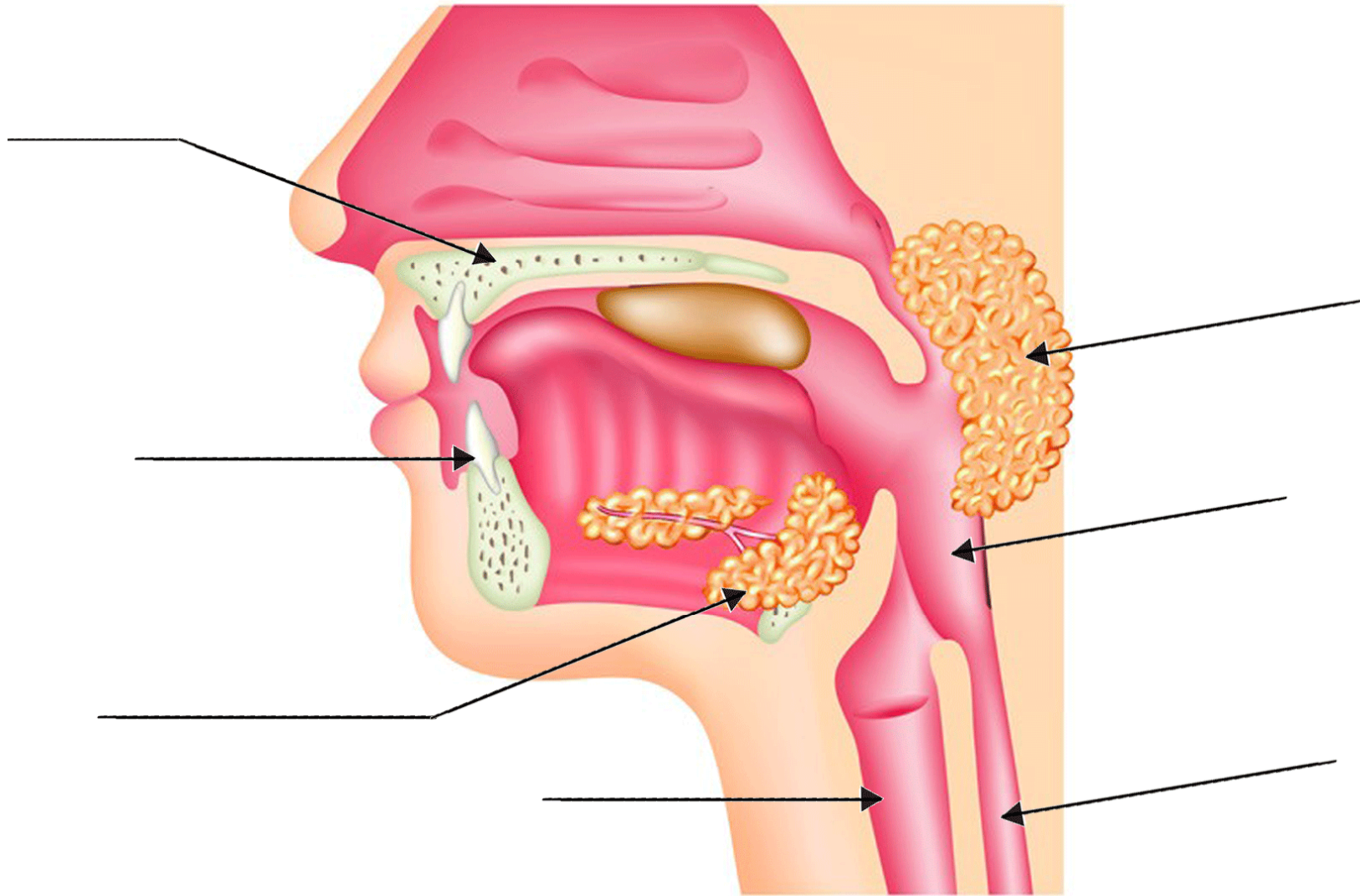
LIVER



PANCREAS

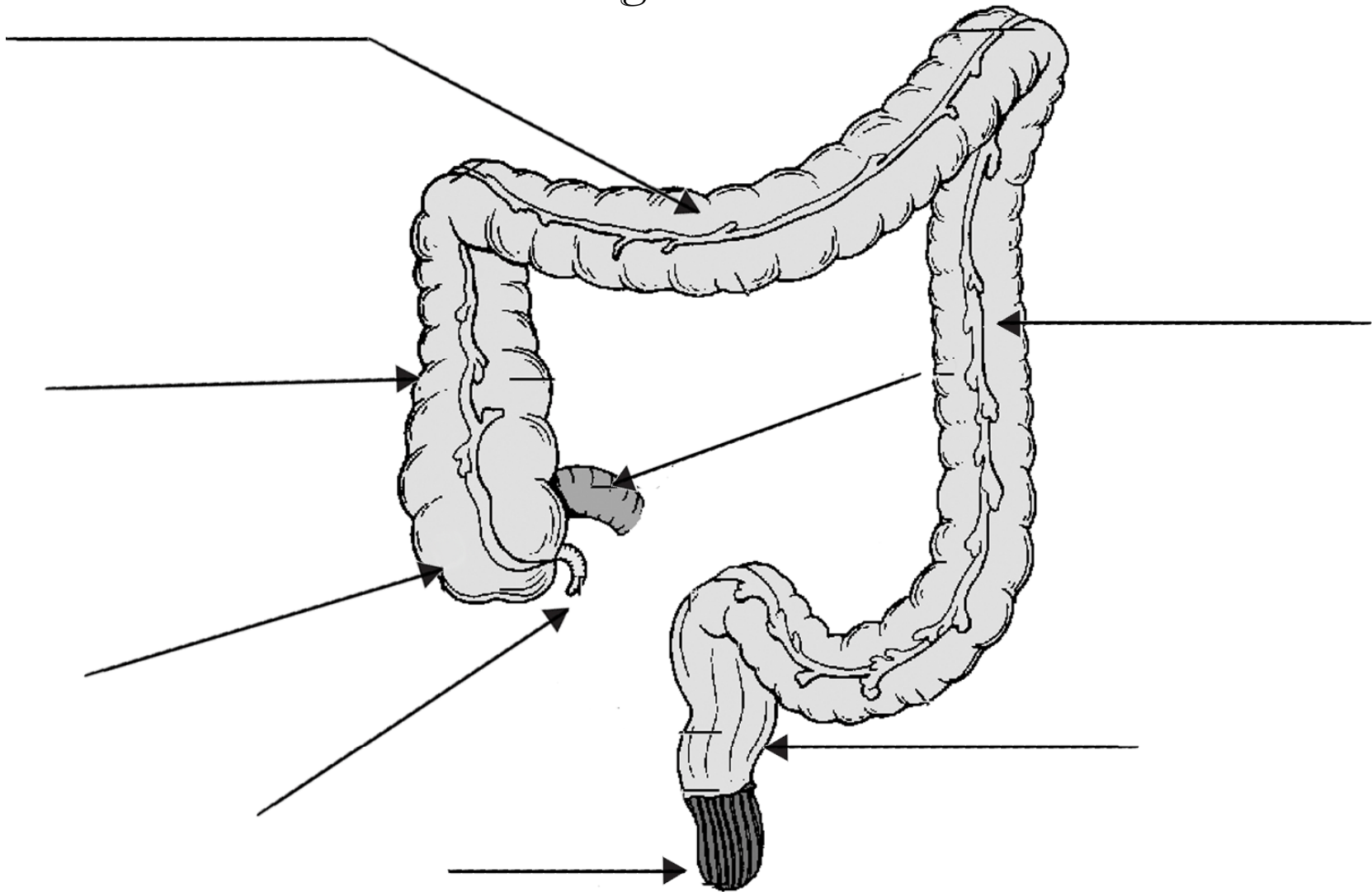


- ❖ larynx
- ❖ pharynx
- ❖ salivary glands (2)
- ❖ esophagus
- ❖ hard palate
- ❖ teeth



larynx	salivary glands (2)
pharynx	esophagus
hard palate	teeth

The Large Intestine



rectum
cecum
anus

transverse colon
ascending colon
appendix

descending colon
end of small intestine

