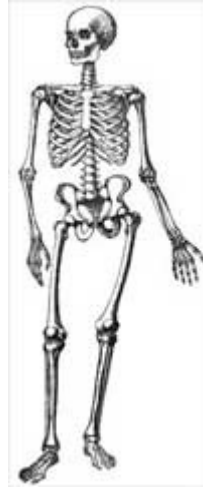


What is Anatomy and Physiology

Blank lined area for writing.

History of Anatomy



History

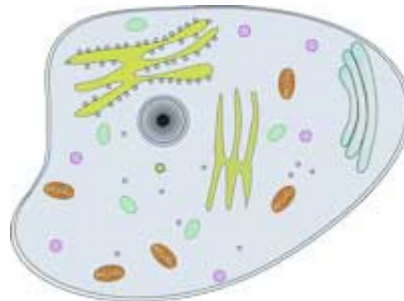
Egyptians

Hebrews

Greeks

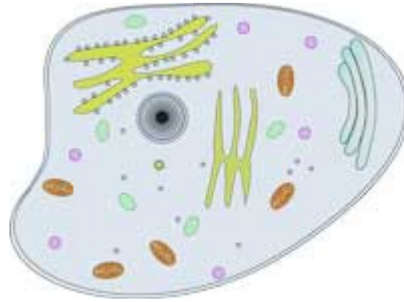
Anatomy of a Cell

Glue this side to lapbook



Draw and label a cell

- * Cell Membrane
- * Ribosomes
- * Mitochondria
- * Centrioles
- * Golgi Body
- * Lysosomes
- * ER
- * Nucleus



PARTS OF A CELL

Cut out and fold on the dotted lines and the solid line above.

Glue or tape the flaps to this side which is the back.

Attach this side to lapbook

Mitochondria

Cell Membrane

Endoplasmic Reticulum (ER)

Nucleus

Lysosomes

Golgi Bodies

Centrioles

